



# SPORT FISHING CATALOG

MASTER THE CATCH



# ABOUT

## TACO MARINE

Founded in 1959, TACO is an established marine manufacturer and the #1 sport fishing brand for Outrigger and Center Rigger Mounts, Telescoping Outrigger Poles, Rigging Kits and Accessories. Find all these great products and more at your favorite marine retailer and on our website **tacomarine.com**.

Like, subscribe and follow us on YouTube, Facebook, Instagram and X, where we post regular sport fishing content and engaging how-to videos. **#TACOOnboard**

## FOLLOW US ON SOCIAL MEDIA



@tacomarine



@tacomarine



@tacomarine



@tacomarine



TACO Marine



@taco\_marine

# TABLE OF CONTENTS

<b>4</b>	ShadeFin®
<b>6</b>	ShadeFin® Mini
<b>9</b>	Outrigger Mounts & Poles
<b>20</b>	Outrigger Accessories
<b>22</b>	Rigging Kits & Components
<b>25</b>	Rod Holders & Accessories
<b>32</b>	Fender Locks
<b>33</b>	VHF Antenna Mounts
<b>34</b>	Masthead Anchor Lights
<b>35</b>	Rigging Instructions
<b>37</b>	Website & Social

---

## TACO® Handy Tips

Helpful tips from sport fishing pros.



Insights into TACO products.

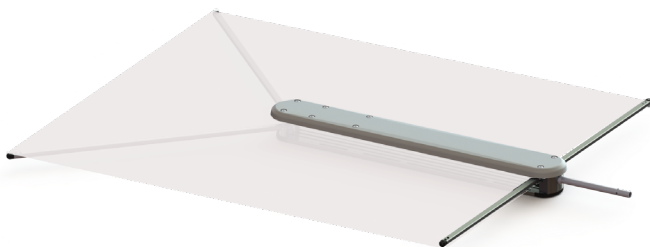


Add an extra layer of sun protection with ShadeFin® by TACO Marine – a product that easily attaches into rod holders, tops and gunnels for convenient, portable shade for almost any boat.

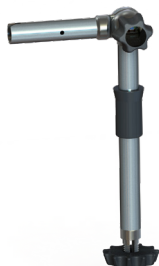
ShadeFin's ocean-inspired design provides expanded shade coverage for multiple areas of the boat, including fore, aft and sides of tops or anywhere there is a rod holder.

ShadeFin's fabric provides an excellent UPF 50+ rating of sun protection while boating and fishing, or when relaxing at the dock and sand bar. To anticipate the needs of many boaters, ShadeFin comes with or without a Fixed Rod Holder Mount, which inserts into any standard rod holder. Additionally, sold-separately mounting options include an Adjustable Rod Holder Mount, a Clamp-On Mount for pipe or tube, a Telescopic Rod Holder Accessory or a Hardtop Bracket Mount.

ShadeFin's body houses the ribs and material, and is offered in black or white. A protective mesh storage sleeve comes standard with ShadeFin. To operate ShadeFin, remove the sleeve, mount to a desired location onboard and activate the underside release tabs. Structural ribs attached to weather-resistant sun-protecting fabric expand out from the body to lock the fin in place.



T10-3000-5



T10-3000-6



T10-3000-7



T10-3000-9





- Patent # 10,604,214; 11,220,312
- T10-3000-7 and T10-3000-11 patent # 7309054 B2
- T10-3000-5 and T10-3000-6 patent pending
- Light, compact and portable
- Easily mounts into any standard rod holder
- Kit comes with a Fixed Rod Holder Mount
- Adjustable Rod Holder Mount options available
- Clamp-on mounting options available for 3/4", 1" schedule-40 pipe and 1-1/4" O.D. tube
- Also works with Grand Slam 170 Outrigger and Grand Slam 170-2 Center Rigger Mounts
- Large coverage area of 5' X 6'
- UPF (Ultraviolet Protection Factor) rating of 50+ ("Excellent" rating)
- Made of high-quality anodized aluminum parts
- Includes mesh carry and stow bag

PART NUMBER	DESCRIPTION
-------------	-------------

T10-3000-1	ShadeFin w/ White Fabric & Bag (No Mount)
T10-3000-2	ShadeFin w/ Black Fabric & Bag (No Mount)
T10-3000-3	ShadeFin w/ White Fabric, Bag & Fixed Rod Holder Mount Kit
T10-3000-4	ShadeFin w/ Black Fabric, Bag & Fixed Rod Holder Mount Kit
T10-3000-5	Fixed Rod Holder Mount
T10-3000-6	Adjustable Rod Holder Mount
T10-3000-7	Adjustable Clamp-On Mount 3/4" & 1" schedule-40 pipe, 1-1/4" O.D. tube
T10-3000-9	Telescopic Rod Holder Accessory
T10-3000-11	Fixed Clamp-On Mount 3/4" & 1" schedule-40 pipe, 1-1/4" O.D. tube
GS-170	Grand Slam 170 Outrigger Mount
GS-170-2	Grand Slam 170-2 Center Rigger Mount



ShadeFin® Mini is ideal for bass boats, flats boats, bay boats, kayaks, pontoons, skiffs and any boat with limited-to-no coverage from the sun. Its versatile design and hearty construction ensures reliable, hassle-free shade protection that can withstand the harsh marine environment.

- 



# SHADEFIN® MINI

## MOUNTING OPTIONS

### SHADEFIN® MINI CLAMP MOUNT

T10-4000-7

Connects to any square rail, table, deck rail or lip up to 2.25" thick and is a great solution for potoon boat rails.



### SHADEFIN® MINI DECK MOUNT

T10-4000-8

Designed for boat decks, console tops or any flat surface.



### SHADEFIN® MINI SQUARE RAIL MOUNT & ROUND RAIL MOUNT

T10-4000-9 & T10-4000-15

T10-4000-9 is for square rail from 1" to 1-1/2" OD.

T10-4000-15 is for round rail from 7/8" to 1" OD.



### SHADEFIN® MINI SEMI-FLUSH MOUNT

T10-4000-11

Enables for the post to be removed and stowed when not in use - leaving only a semi-flush ring mounted in place.



### SHADEFIN® MINI SIDE WALL MOUNT

T10-4000-12

Ideal for consoles, side walls, gunnel walls or deck railing of boats.



## SHADEFIN® MINI SWIVEL SEAT MOUNT

T10-4000-13

Universally designed to fit most boat swivel seats on the market.



## SHADEFIN® MINI KAYAK MOUNT

T10-4000-14

Designed for most sit-on-top kayaks.



## KITS

PART NUMBER	DESCRIPTION
T10-4000-1	ShadeFin® Mini with White Fabric & Bag (No Mount)
T10-4000-2	ShadeFin® Mini with Black Fabric & Bag (No Mount)

## MOUNTING OPTIONS

PART NUMBER	DESCRIPTION
T10-4000-7	ShadeFin® Mini Clamp Mount
T10-4000-8	ShadeFin® Mini Deck Mount
T10-4000-9	ShadeFin® Mini Square Rail Mount
T10-4000-11	ShadeFin® Mini Semi-Flush Mount
T10-4000-12	ShadeFin® Mini Side Wall Mount
T10-4000-13	ShadeFin® Mini Swivel Seat Mount
T10-4000-14	ShadeFin® Mini Kayak Mount
T10-4000-15	ShadeFin® Mini Round Rail Mount

# GRAND SLAM 300 OUTRIGGER MOUNT



**Single-Handle Operation is Here!** The Grand Slam 300 – a stainless-steel / polished, anodized aluminum, single-handle Outrigger Mount that delivers enhanced safety and performance with smooth, one-handed operation from the deck. Easily adjust rotation and lift of outrigger poles using the GS-300's ergonomic crank handle, which locks flush into the base. The Mount's attractive, all-metal design means no plastic components, a greater water seal and increased protection from the elements. The GS-300 pairs with TACO's award-winning Open Water Internal & Collapsible Carbon Fiber Outrigger Poles, as well as Aluminum or Carbon Fiber Tele-Outrigger Poles up to 22' with an underside pin-locking connection – eliminating the need for port and starboard designations.

- Constructed from cast stainless-steel and machined aluminum for a stronger, lighter base
- Pairs with 1-1/2" DIA Tele-Outriggers Poles up to 22'
- No port or starboard designation
- Underside locking pin connection
- Arm lifts up to 46.5° from horizontal position for kite fishing and dock clearance
- Stainless-steel, ergonomic, single-hand crank handle with ball bearing
- Enables lift and rotation of outrigger poles from safety of the deck
- Unique, locking flip handle
  - Keeps the handle knob on the bottom when lifting or rotating the outrigger
  - Provides full torque control and safety of deployment at all times
- Robust, dual-detented lifting crank handle locks flush into base
- Includes mounting hardware for easy installation
- Backing plates (BP-0300BSY-1), sold separately



## PART NUMBER

GS-300

## DESCRIPTION

Grand Slam 300 Outrigger Mount



# GRAND SLAM 390 OUTRIGGER MOUNT



- Stronger gusset support and thicker arm for enhanced durability
- Elevation crank handle provides lift from under the T-top
- Allows for horizontal rotation from under the T-top
- 30° offset handle for better hand clearance
- Pairs with 1-1/2" Tele-Outriggers
- Also available as the GS-390-180 with a fore-facing rotation handle for tops that require additional hand clearance
- Available as the GS-390XL for hardtops up to 4-1/2" thick
- Sold in pairs



The GS-390 is the evolution of the popular Grand Slam 380 Outrigger Mount.

## PART NUMBER

## DESCRIPTION

GS-390	Grand Slam 390 Outrigger Mount
GS-390XL	Grand Slam 390XL Outrigger Mount
GS-390-180	Grand Slam 390-180 Outrigger Mount

## SOLD SEPARATELY



**OT-0318HD**  
18' Deluxe Aluminum  
Tele-Outriggers



**OT-CF Series**  
16' & 20' Carbon Fiber  
Tele-Outriggers



**OI Series**  
19' & 22' Internal & Collapsible  
Carbon Fiber Outriggers

# PRO SERIES GS-400 OUTRIGGER MOUNT



- Heavy-duty base and arm with 30° offset handle
- Handles additional torque and whip from outrigger poles up to 24'
- Pairs with 1-1/2" Tele-Outriggers
- Strong, locking head allows perfect positioning
- Allows for horizontal rotation from under the T-top
- Includes matching 6"x 8"x 1/2" thick oval backing plates for additional support and strength
- Sold in pairs



The GS-400 features TACO's Spline Lock technology, which is an engineered mechanism that allows multiple adjustment positions and prevents slippage while securing outriggers at the desired height position for increased reliability and performance.

## PART NUMBER

## DESCRIPTION

GS-400

Pro-Series GS-400 Outrigger Mount

## SOLD SEPARATELY



**OT-0318HD**  
18' Deluxe Aluminum  
Tele-Outriggers



**OT-CF Series**  
16' & 20' Carbon Fiber  
Tele-Outriggers



**OI Series**  
19' & 22' Internal & Collapsible  
Carbon Fiber Outriggers

# GRAND SLAM 280 & 2801 OUTRIGGER MOUNTS



- ▶ Tested and proven quality with a sleek appearance
- ▶ Compatible with 1-1/2" Tele-Outrigger Poles. Also Compatible with the 1-1/8" Tele-Outrigger Poles with the addition of the GSC-0025 Base Reducer.
- ▶ Strong, locking head allows perfect positioning
- ▶ Allows for horizontal rotation from under the T-top
- ▶ GS-2801 features a 30° offset handle for greater hand clearance
- ▶ Sold in pairs



GS-280

GS-2801



The GS-280 and GS-2801 feature TACO's Spline Lock technology, which is an engineered mechanism that allows multiple adjustment positions and prevents slippage while securing outriggers at the desired height position for increased reliability and performance.

PART NUMBER	DESCRIPTION
GS-280	Grand Slam 280 Outrigger Mount
GS-2801	Grand Slam 2801 Outrigger Mount

## SOLD SEPARATELY



**OT Series**  
15' & 18' Aluminum  
Tele-Outriggers



**RK-0001PB**  
Premium Rigging Kit



**GSC-0025**  
Outrigger Base Reducer

# GRAND SLAM 170 OUTRIGGER MOUNT



- ▶ Compatible with 1-1/8" Tele-Outrigger Poles and ShadeFin®
- ▶ GS-170 adds up to 30' of fishing spread or 5' x 6' area of shade
- ▶ Sure-Grip knob allows lift adjustments every 18°
- ▶ Locking lever secures out-bound rotation to desired location
- ▶ Delrin bearings allow for smooth, secure operation
- ▶ Easy installation with the outrigger-ready mounting plates
- ▶ Sold in pairs



The GS-170 features TACO's Spline Lock technology, which is an engineered mechanism that allows multiple adjustment positions and prevents slippage while securing outriggers at the desired height position for increased reliability and performance.

## PART NUMBER

## DESCRIPTION

GS-170

Grand Slam 170 Outrigger Mount

## SOLD SEPARATELY



**OT Series**  
15' Aluminum  
Tele-Outriggers



**RK-0001SB**  
Standard Rigging Kit



**F40-0030**  
Outrigger Line Caddy



## GRAND SLAM 170-2 CENTER RIGGER

The Grand Slam 170-2 is the industry standard for center rigger mounts. Used on center consoles to allow a “way-back” bait presentation, it is the perfect addition to your boat’s offshore display. Its easy installation and attractive appearance will make your days on the water more productive.

- ▶ Compatible with 1-1/8” Center Rigger Pole and ShadeFin®
- ▶ Stainless-steel and Anodized Aluminum construction
- ▶ Sure-Grip knob allows lift adjustments every 18°
- ▶ Delrin bearings allow for smooth, secure operation
- ▶ Easy installation with the center rigger-ready mounting plate
- ▶ Sold individually



### PART NUMBER

### DESCRIPTION

GS-170-2

Grand Slam 170-2 Center Rigger Mount

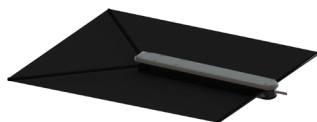
### SOLD SEPARATELY



**OC Series**  
8' Aluminum  
Center Rigger Poles



**RK-0001PCB**  
Center Rigging Kit



**T10-3000-2**  
ShadeFin®



## STRIKER BASE GUNNEL MOUNT



- ▶ Unique Hex nut locking design offers multiple fishing positions
- ▶ Ambidextrous 45° arm ideal for trolling from gunnel
- ▶ Removable arm allows for unobstructed gunnels
- ▶ Pairs with 1-1/2" or 1-1/8" Outrigger Poles
- ▶ Sold in pairs



PART NUMBER	DESCRIPTION	BASE	BASE DIM.	ID
F16-0150-F	Gunnel mount w/45° Arm	5-3/4" x 3-7/8" x 3/8"	1-1/2"	1-1/2"
F16-0212-F	Gunnel mount w/45° Arm	5-1/8" x 2-5/8" x 3/16"	1-1/8"	1-1/8"

## CENTER RIGGER FIXED MOUNT

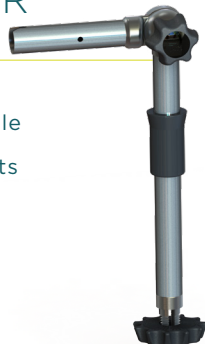
- ▶ Patent # 7309054 B2
- ▶ Easily installed on your existing T-top piping
- ▶ Polished, high-quality stainless steel Type-316L
- ▶ Allows for exact positioning
- ▶ Features anti-rotation set screw
- ▶ Pairs with 8' and 12' Center Rigger Poles
- ▶ Fits Securely with 3/4" and 1" schedule-40 pipe and 1-1/4" O.D. tube.
- ▶ Sold individually



PART NUMBER	DESCRIPTION	HEIGHT	WIDTH
F16-0311C-1	Clamp-On Center Rigger Fixed Mount	7-1/2"	2-1/8"

## ADJUSTABLE CENTER RIGGER ROD HOLDER MOUNT

- ▶ Manufactured from Type-316L stainless steel
- ▶ Features Sure-Grip knob for easy and secure angle adjustment
- ▶ Adjusts up and down every 15° with safety detents
- ▶ Locking Knob secures the mount in place
- ▶ Features nylon sleeve for additional rod holder stabilization
- ▶ Includes self-aligning notch and pin-locking hole
- ▶ Pairs with ShadeFin and 1-1/8" diameter center rigger poles



PART NUMBER	DESCRIPTION
T10-3000-6	Adjustable Center Rigger Rod Holder Mount, 1-1/8" OD

# OPEN WATER INTERNAL & COLLAPSIBLE CARBON FIBER OUTRIGGER POLES

- Available in 19' and 22'
- 3-section pole with our patent-pending latching Twist & Lock mechanism connection
- Adjustable base/butt for perfect halyard, trolling alignment
- Internally rigged with 400-pound mono halyard line in three distinct colors
- Poles come labeled with port and starboard designations
- Poles can be removed and collapsed/folded for easy storage and transportation
- Pairs with all TACO outrigger mounts with standard 1-1/2" diameter pin-locking arm
- Compatible with other outrigger mounts on the market that accepts 1-1/2" diameter poles
- Shipping-friendly in 96" box
- Replacement standard and premium rigging kits available (**RK-0003TSP**, **RK-0003TSS**)



## PART NUMBER

## DESCRIPTION

OI-3190CF	Open Water Internal & Collapsible Carbon Fiber Outrigger Poles, 19'
OI-3220CF	Open Water Internal & Collapsible Carbon Fiber Outrigger Poles, 22'

## SOLD SEPARATELY



**RK-0003MP**  
Premium Triple  
Mono Rigging Kit



**GS-390**  
Grand Slam 390  
Outrigger Mount



**GS-300**  
Grand Slam 300  
Outrigger Mount

# CARBON FIBER TELE-OUTRIGGERS

- Patent US 11,116,197
- UV-resistant, clear-coated black carbon fiber pole construction
- Pin-locking butt design
- Double outrigger line design on the 16' poles, triple line design on the 20' poles and quadruple line design on the 24' poles
- Patented 360° swivel collar design allows for a more natural movement of bait and less halyard line friction
- Telescopes to less than 8' for bridge clearance and trailering
- 24' poles telescope to less than 9'
- Locking pin design keeps poles from collapsing when fully extended and allows for easy collapsing
- Includes adjustable roller line caddy with brass rollers - allowing for easy rigging to the T-Top or gunnel and better line management



PART NUMBER	DESCRIPTION
OT-3160CF	1-1/2" Black w/Silver Rings & Tips, 16'
OT-4200CF	1-1/2" Black w/Silver Rings & Tips, 20'
OT-4240CF	1-1/2" Black w/Silver Rings & Tips, 24'
OT-4200CF-HD	1-1/2" Black w/Silver Rings & Tips, 20', Twist & Lock
OT-4240CF-HD	1-1/2" Black w/Silver Rings & Tips, 24', Twist & Lock

## SOLD SEPARATELY



**F16-0204-1**  
Outrigger Line Tensioner



**RK-0002PB**  
Premium Double  
Rigging Kit



**RK-0003PB**  
Premium Triple Braid  
Rigging Kit

# 18' DELUXE ALUMINUM TELE-OUTRIGGERS



Designed for offshore trolling in search of bigger fish, these poles have a thicker wall for enhanced durability and feature patented 360° swivel collars for better natural bait presentation and reduced halyard friction. The Deluxe Poles telescope below 8' for trailering and bridge clearance and extend to 18' – increasing the strike zone when fishing.

- Patent US 11,116,197
- 3-piece telescopic pole with pin-locking butt design
- Fits standard 1-1/2" bases
- Solid Delrin support bearings
- Linear lock pins for easy operation
- Easily collapsed and stowed
- Roller bearing halyard pulleys
- Additional swivel collar to separate halyard lines
- Corrosion resistant
- Designed for use with our GS-280, GS-2801, GS-390 and GS-400 Outrigger Mounts



## PART NUMBER

## DESCRIPTION

OT-0318HD-VEL

1-1/2" Silver w/Silver Rings & Tips, 18'

OT-0318HD-BKA

1-1/2" Black w/Silver Rings & Tips, 18'

## SOLD SEPARATELY



**F16-0204-1**  
Outrigger Line Tensioner



**RK-0002MP**  
Premium Double  
Mono Rigging Kit



**RK-0003MP**  
Premium Triple  
Mono Rigging Kit

# ALUMINUM TELE-OUTRIGGERS & CENTER RIGGER POLES



- Designed for universal use with TACO Marine Grand Slam Outrigger Mounts, Striker Bases and Center Rigger Mounts that accept 1-1/2" or 1-1/8" outriggers
- Telescopes to less than 6' for bridge clearance and trailering
- Locking pin feature for secure placement when extended
- 15' Tele-Outrigger Poles are perfect for boats up to 30'
- 8' Center Rigger Pole is perfect for boats up to 30'



PART NUMBER	LENGTH	DIAMETER	COLOR
OT-0442BKA15	15'	1-1/8"	Black W/ Silver Rings & Tips
OT-0442VEL15	15'	1-1/8"	Silver W/ Silver Rings & Tips
OT-0542BKA15-HD	15'	1-1/2"	Black W/ Silver Rings & Tips
OT-0542VEL15-HD	15'	1-1/2"	Silver W/ Silver Rings & Tips
OC-0422BKA8	8'	1-1/8"	Black W/ Silver Rings & Tips
OC-0422VEL8	8'	1-1/8"	Silver W/ Silver Rings & Tips

## SOLD SEPARATELY



**F40-0030BKA-1**  
Outrigger Line Caddy



**RK-0002MP**  
Premium Double  
Mono Rigging Kit



**RK-0002PB**  
Premium Double  
Mono Rigging Kit



# OUTRIGGER LINE TENSIONER



If you rig your halyard lines to the gunnel of your boat, the Outrigger Line Tensioner is what you've been waiting for. Its sleek, stainless steel mushroom design allows halyard pulley blocks to be locked into place with zero effort. The Line Tensioner eliminates unattractive, and sometimes painful, "camel-back" cleats.

- Mushroom head-threaded bolt
- Designed for boats with 1" to 2-1/2" thick gunnels
- Easy Ronstan medium cam cleat for up to 1/4" thick rope
- Heavy-duty lock washer to prevent loosening
- Electro-polished bracket with countersunk mounting holes



## PART NUMBER

## DESCRIPTION

F16-0204-1

Outrigger Line Tensioner

# OUTRIGGER LINE CADDY



Halyard lines, while critical for catching fish, can be frustrating to keep neat and organized. Our Outrigger Line Caddy provides a simple option to keep them tamed. It's easy-to-install design is a must to add to your outrigger system collection.

- Fits all TACO Marine Outrigger Poles
- For 1-1/2" poles, we recommend removing the rubber spacer
- Adjusts to desired distance, depending on your needs



## PART NUMBER

## DESCRIPTION

## ID

F40-0030BKA-1

Outrigger Line Caddy

1-1/8" to 1-1/2"

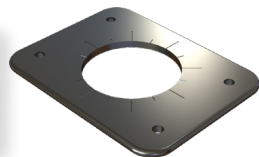
## GRAND SLAM BACKING PLATES



- ▶ BP-150BSY-320-1 – Fits Grand Slam 200 and 300 series bases
- ▶ BP-0300BSY-1 – Fits GS-300, featuring directional markers every 22.5°
- ▶ Matches existing base hole pattern
- ▶ No drilling
- ▶ Sold in pairs



BP-150BSY-320-1

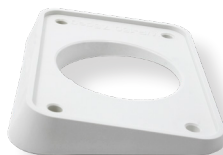


BP-0300BSY-1

## WEDGE PLATE



- ▶ Corrects angle of bases to be perpendicular to the T-top
- ▶ Fits Grand Slam 200 and 300 series bases
- ▶ No drilling
- ▶ Sold in pairs



## OUTRIGGER BASE REDUCER



- ▶ Reduces Grand Slam arm I.D. from 1-1/2" to 1-1/8"
- ▶ Nylon, easy-to-install sleeve design



PART NUMBER	DESCRIPTION	WIDTH	LENGTH
BP-150BSY-320-1	Grand Slam Backing Plate	5"	6.5"
BP-0300BSY-1	Grand Slam 300 Backing Plate	5"	6.5"
WP-150WHA-1	Wedge Plate	4"	6"
GSC-0025	Outrigger Base Reducer	-	6"

## PREMIUM TRIPLE MONO RIGGING KIT



- Ronstan triple roller pulley shock cord with stainless-steel snap hooks, 1/8" thick, 180' coil of Lindgren Pitman 400# Monofilament in Black, adjustable tension release clips, 1-3/4" outrigger line stops, stainless-steel eye strap and screws, double sleeve crimps, coastlock-style swivels and snap swivels and quick-dry mesh bag
- Rigs up to 24' carbon fiber outriggers



## PREMIUM TRIPLE BRAID RIGGING KIT

- Ronstan triple roller pulley shock cord with stainless-steel snap hook, 1/8" thick 300' Dacron black rigging cord, adjustable tension release clips, 1-3/4" outrigger line stops, stainless-steel eye strap and screws, double sleeve crimps, coastlock-style swivels and snap swivels and quick-dry mesh bag
- Rigs up to 18' outriggers



## PREMIUM DOUBLE MONO RIGGING KIT

- Double roller pulley shock cord with stainless-steel snap hooks, 1/8" thick 180' coil of Lindgren Pitman 400# Monofilament in Black, adjustable tension release clips, 1-3/4" outrigger line stops, stainless-steel eye strap and screws, double sleeve crimps, coastlock-style swivels and snap swivels and quick-dry mesh bag
- Rigs up to 20' carbon fiber outriggers



## PREMIUM DOUBLE RIGGING KIT

- Single roller pulley shock cord with stainless-steel snap hook and eye insert, 1/8" thick 200' Dacron black rigging cord, adjustable tension release clips, 1-3/4" outrigger line stops, pad eye with screws, double sleeve crimp, snap swivel and quick-dry mesh bag
- Rigs up to 22' outriggers





## PREMIUM RIGGING KIT

- Single roller pulley shock cord with stainless-steel snap hook and eye insert, 1/8" thick 100' Dacron black rigging cord, adjustable tension release clips, 1-1/4" outrigger line stops, pad eye with screws, double sleeve crimp, snap swivel and quick-dry mesh bag
- Rigs up to 22' outriggers



## CENTER RIGGING KIT

- Single roller pulley shock cord with a stainless-steel snap hook and eye insert, 1/8" thick 50' Dacron black rigging cord, adjustable tension release clips, 1-1/4" outrigger line stops, pad eye with screws, double sleeve crimp, swivel, snap swivel and quick-dry mesh bag
- Rigs up to 22' center rigger



## STANDARD RIGGING KIT

- Glass ring with brass strap clips, 1/8" thick 100' Dacron black rigging cord, adjustable tension release clips, 1-1/4" outrigger line stops, pad eye with screws, double sleeve crimp, swivel, snap swivel and quick-dry mesh bag
- Rigs up to 22' outriggers



PART NUMBER	DESCRIPTION	LENGTH
RK-0003MP	Premium Triple Mono Rigging Kit	180'
RK-0003PB	Premium Triple Braid Rigging Kit	300'
RK-0002MP	Premium Double Mono Rigging Kit	180'
RK-0002PB	Premium Double Rigging Kit	200'
RK-0001PB	Premium Rigging Kit	100'
RK-0001PCB	Center Rigging Kit	50'
RK-0001SB	Standard Rigging Kit	100'

# RIGGING COMPONENTS



COK-0001B-2



COK-0001T-2



COK-0008B-2



COK-0017-2 / COK-0018-2



COK-0004G-2



F16-1200-2



COK-0043-1



COK-0020-2



COK-0021-2



COK-0022-2

## PART NUMBER

## DESCRIPTION

COK-0001B-2	Standard Release Clip
COK-0001T-2	Premium Outrigger Release Clip
COK-0008B-2	1/8" Black Dacron Line 100'
COK-0017-2	Outrigger Line Stop 1-1/4"
COK-0018-2	Outrigger Line Stop 1-3/4"
COK-0004G-2	Outrigger Glass Rings
F16-1200-2	Stainless-Steel Straps
COK-0020-2	Shock Cord with Pulley, 12"
COK-0021-2	Glass Eye with Shock Cord, 12"
COK-0022-2	Shock Cord with Double Pulley, 12"
COK-0043-1	Triple Roller with Sock Cord Pulley 16"



# OLYMPIC ROD HOLDER CLUSTER

F31-0790BXY-1



The Rod Holder Cluster “Five-Banger” is the ultimate in on-boat and transportable rod storage. The ability to store, transport, clean and fish combos from this heavy-duty but lightweight polished aluminum unit is the perfect addition to your tackle arsenal.

- Flared 9-3/4” rod holders for big game tackle
- I-Beam construction ensures rods are locked and properly spread out
- Fits into standard rod holders 1-5/8” in diameter
- Accepts F31-2201WHA-C insert, sold separately
- Solid gimbal design for additional strength



## ROD HOLDER LINER

- Anti-fungal, high-quality PVC liner for Olympic Rod Holder Cluster
- 1-year limited warranty



PART NUMBER	DESCRIPTION	COLOR
F31-2202WHA-C	Rod Holder Liner with Lip Protection for 2200 Series	White

# KITE FISHING ROD CLUSTER

F31-0770BSA-1

Place your kite fishing outfits in the perfect boat location. This three-rod cluster keeps everything close, tidy and easy to handle when the bite turns on.

- 15° bent shaft for clearance
- Fits all standard gunnel mount rod holders
- Includes form-fitted, anti-fungal PVC white liner
- Gimbal design for secure locking placement
- Bag included



PART NUMBER	HEIGHT	WIDTH	ROD HOLDER HEIGHT	ROD HOLDER ID
F31-0790BXY-1	26"	13-1/2"	9-3/4"	1-3/4"
F31-0770BSA-1	24-1/2"	20"	9-3/4"	1-3/4"

# DELUXE TRIDENT ROD HOLDER CLUSTER STRAIGHT & OFFSET

Be prepared to increase your catch, turn one rod holder into three and keep your kite lines close-at-hand. Our TACO Marine Deluxe Trident Rod Holders makes controlling your kite lines easy, compact and organized.



- ▶ Durable, welded, high-polished aluminum construction
- ▶ Three, 9-3/4" flared rod holders in a trident design
- ▶ 1-1/2" shaft fits into standard rod holders with a 1-5/8" diameter
- ▶ Large 9-3/4" rod holders handle bigger and heavier rods and reels
- ▶ Stored in a mesh bag for easy drying if stored wet



F31-0780

F31-0781

PART NUMBER	DESCRIPTION	HEIGHT	WIDTH	R.H. HEIGHT	R.H. ID
F31-0780BXY-1	Rod Holder Cluster Straight	24-7/8"	22-3/8"	9-3/4"	1-3/4"
F31-0781BXY-1	Rod Holder Cluster Offset	25-1/2"	22-3/8"	9-3/4"	1-3/4"

# ALUMINUM ROD RACKS



- ▶ 3- or 4-rod rack options
- ▶ Hidden fasteners
- ▶ Slotted to lock-in rods/reels
- ▶ Form-fitted PVC black liner
- ▶ Designed for light tackle spinning rod/reel combos



## 4-ROD TRANSOM MOUNT RACK

- ▶ Patent-pending spline adjustment technology
- ▶ Adjustable to fit any boat's transom
- ▶ Form-fitted PVC white liner



PART NUMBER	DESCRIPTION	HEIGHT	WIDTH	R.H. ID
F31-3004BSA-1	4-Rod Holder Rack, Aluminum	8-1/2"	16"	1-1/2"
F31-3504BSA-1	4-Rod Transom Mount Rack	10"	41"	1-7/8"

# ROD HANGERS



## STATIONARY ROD HANGER & REVOLVING ROD TIP HOLDER

- High-polished, marine-grade Type-316L stainless steel
- Spring locking rod tip holder
- Delrin inserts
- Concealed installation screws



## HANGER RACKS

- 2-, 3- and 4-Rod Hanger Racks available
- Pre-drilled mounting holes and beveled edges
- Mount vertically, horizontally or overhead



PART NUMBER	DESCRIPTION	LENGTH	WIDTH
F19-0006-1	Revolving Rod Tip Holder	2-1/4"	1"
F19-0006-2	Stationary Rod Hanger	2-3/4"	1"
F16-2700-1	Revolving Rod Tip Holder & Stationary Rod Hanger Kit	-	1"
F16-2751-1	2-Rod Hanger w/ Poly Rack	9-1/8"	1-1/2"
F16-2752-1	3-Rod Hanger w/ Poly Rack	18"	1-1/2"
F16-2753-1	4-Rod Hanger w/ Poly Rack	13-1/2"	1-1/2"

## REEL HANGER WITH ROD TIP HOLDER KIT

- Corrosion-resistant stainless steel spring secures reel into position
- Adjustable to fit most popular trolling needs
- Patent number US7228655



PART NUMBER	DESCRIPTION	LENGTH	WIDTH
F16-2810-1	Reel Hanger w/ Rod Tip Holder Kit	4"	6"

# CLAMP-ON ROD HOLDER



Turn your boat into a strategic fishing machine and no longer worry about fabricating rod holders onto your T-top. The TACO Marine Type-316L Stainless Steel Clamp-On Adjustable Rod Holder allows you to place your combo at any location on your T-top or anywhere there is tubing on your boat.



- Sizes available for 7/8", 1" and 1-1/4" O.D. tube and 1-1/16", 1-5/16", 1-11/16" and 1-15/16" schedule-40 pipe
- Manufactured from Type-316L stainless steel
- Rotates and lock every 18°
- For use on vertical and horizontal pipe/tube
- Flared opening
- I-beam weld pin base
- Easy, clamp-on installation in just minutes
- Includes form-fitted PVC white liner
- Patent number US7309054



PART NUMBER	FITS	LOCATION	RH ID	FINISH/COLOR
F16-2600POL-1	7/8" & 1" OD Tube	Bow, Rail, Grail Rail	1-5/8"	Polished
F16-2623POL-1	1-1/16" & 1-5/16" schedule-40 Pipe, 1-1/4" OD Tube	T-Top, Leaning Post, Polling Platform	1-5/8"	Polished
F16-2630POL-1	1-11/16" & 1-15/16" schedule-40 Pipe	T-Top, Leaning Post, Polling Platform	1-5/8"	Polished

# DELUXE POLY ROD RACKS



Easily organize rods, pliers and knives in the precise location of your choosing with our Deluxe Poly Rod Racks.

- 2-, 3- and 4-Rod Racks available
- Made from UV-stabilized polyethylene



PART NUMBER	DESCRIPTION	COLOR	LENGTH	HEIGHT	WIDTH
P03-062W	2-Rod Deluxe Poly Rod Rack	White	12"	11"	3"
P03-063W	3-Rod Deluxe Poly Rod Rack	White	18"	11"	3"
P03-064W	4-Rod Deluxe Poly Rod Rack	White	14"	11"	3"

## MULTI-PURPOSE 15° PORTABLE CLEAT



Securely tie off lines and set fenders all in one place. Because it fits standard rod holders, this cleat is movable, stowable and a practical step forward in your boating and docking experience.

- Stainless steel Type-304
- Large S-shape 9" cleat design
- Accommodates up to 3/4" dock line for larger boat applications
- Tube O.D. 1.25" fits into standard rod holders 1-5/8" in diameter
- Loop hole design to hang fenders over the side
- Packaged in mesh bag for easy drying if stored wet and to avoid



### PART NUMBER

### DESCRIPTION

F16-0861POL-1

Multi-Purpose Cleat - 15° SS Type 304

## COME ON BOARD HANDLES



Boarding your boat is easier than ever before with our Come On Board Handles. At nearly 5' in length, these handles features a large grabbing surface with a finger-molded design for comfortable, strong support for getting on and off your boat.

- Manufactured from stainless steel Type-304
- **Fixed Base Mount** - Stainless-steel receiver base is ideal for gunnel or transom platform mounting. Attaches permanently to gunnel
- **Rod Holder Mount** - 1-1/2" tube diameter fits into standard rod holders 1-5/8" in diameter. Solid gimbal mount design assures proper locking placement
- Multiple piece design for easy storage



### PART NUMBER

### DESCRIPTION

### LENGTH

### DIAMETER

F16-0800-1	Come On Board Handle - Fixed Base Mount	56-1/4"	1-1/2"
F16-0810-1	Come On Board Handle - Rod Holder Mount	57-1/2"	1-1/2"
F16-0800C-1	Come On Board Handle Receiver w/ Backing Plate	-	1-1/2"

## BUNGEE ROD HOLDERS



Whether under the gunnel of your boat or on the wall in a garage, store your rods and reels safely and neatly with our Bungee Rod Holders.

- 2-, 3- and 4-Rod options available
- Made from UV-stabilized polyethylene
- Includes mounting brackets and hardware



## PRE-DRILLED T-TOP EXTRUSION PLATES



- Fits Grand Slam 200, 300, 400 and 500 series bases
- Three different lengths available
- No drilling required
- Heavy-duty aluminum construction
- Channeled to allow rigging and wiring runs
- Sold in pairs



PART NUMBER	DESCRIPTION	COLOR	LENGTH	HEIGHT	WIDTH
P03-132W	2-Rod Bungee Rod holder	White	13"	6"	1"
P03-133W	3-Rod Bungee Rod holder	White	16"	6"	1"
P03-134W	4-Rod Bungee Rod holder	White	20"	6"	2"
GSE-1939BSA20	320 Grit Brite Anodized (BSA)	-	20"	-	-
GSE-1939BSA30-C	320 Grit Brite Anodized (BSA)	-	30"	-	-





## ALUMINUM QUICK RELEASE FENDER LOCK

Designed for square tube, simply set your fender line to your preferred length, attach to the fender lock, and insert into the fitting. When you're ready to set off, simply push the button, remove the pin, and stow.

- ▶ Manufactured from 6000-series Aluminum
- ▶ Designed for pontoon boats
- ▶ Features a 1" diameter button
- ▶ Fits 1" to 1-1/4" square tube
- ▶ Mounting application fastens from the bottom of the square tube



## QUICK RELEASE FENDER LOCK FOR FIBERGLASS

This complete kit includes the locking Pull Pin and the Receiver. The Receiver features a spring-loaded hole cover that provides a finished look when the Pull Pin is not inserted, and protects the interior of the receiver from the elements.

- ▶ Manufactured from stainless steel Type-316L
- ▶ Designed for fiberglass
- ▶ Overall height above deck is 1-11/16"
- ▶ Features a 1" diameter button



## QUICK RELEASE FENDER LOCK

For dockside safety and convenience, our Quick Release Fender Lock ensures secure, quickly stored fender lines, which are also maintained at the optimal length because of the attached mounting pin.

- ▶ Manufactured from stainless steel Type-316L
- ▶ Overall height above deck is 1-19/32"
- ▶ Includes a 1/4" drain plug
- ▶ Designed for easy, single-hand operation
- ▶ Allows simple installation and removal of float-style fenders



PART NUMBER	DESCRIPTION
F18-0186VEL-1	Aluminum Quick Release Fender Lock
F16-0200-1	Quick Release Fender Lock for Fiberglass
F16-0151-1	Quick Release Fender Lock

## GRAND SLAM 800 VHF ANTENNA MOUNT



The GS-800 VHF Antenna Mount was created specifically to prevent climbing on the boat gunnel to raise and lower a VHF antenna. Lift and descend the antenna from the safety of the deck from under the top. Its smooth operation, attractive machined aluminum frame and cast stainless-steel rotator make this item a must for any boater.

- Standard 1"-14 thread (male) shaft to accept standard VHF antennas
- Folding crank handle locks flush into base
- Machined / Anodized aluminum body with a light brushed finish



## GRAND SLAM 860 ELECTRIC VHF ANTENNA MOUNT



The GS-860 enables boaters to easily adjust their VHF Antenna from the safety of the deck with the push of a button. This is a fully electric unit with a hidden base wire inside the hardtop, which easily installs to the top's surface. It has the same hole pattern as the GS-850, making upgrades possible, and fits all top thicknesses.

- Standard 1"-14 thread (male) shaft to accept standard VHF antennas up to 8'
- Polished stainless-steel housing
- Includes 6" lead of 20-gauge wire from the base
- 12-volt DC power supply for lift and descent
- Features a nylon knob on the stainless steel Type-316L breakaway pin for easy manual operation
- Pairs with 6° Wedge Plate (WP-860-960WHA), sold separately
- Pairs with backing plate (BP-860BXZ), sold separately



### PART NUMBER

### DESCRIPTION

GS-800-1	Grand Slam 800 VHF Antenna Mount
GS-860	Grand Slam 860 Electric VHF Antenna Mount



## GRAND SLAM 900 MASTHEAD ANCHOR LIGHT

Climbing on the boat gunnel to raise and lower the masthead anchor light is dangerous, time consuming and frustrating. The GS-900 allows boat operators to lift and descend this navigational requirement from the safety of the deck, right under the top and without ever having to climb on the gunnel again.

- Ideal for boats 39' in length or shorter
- Certified for USCG-required 3-nm
- LED light and shaft included
- Machined / Anodized aluminum body with a light brushed finish
- 3-year limited warranty on mechanical
- 1-year limited warranty on electrical



## GRAND SLAM 960 ELECTRIC MASTHEAD ANCHOR LIGHT



The GS-960 enables boaters to easily adjust their Masthead Anchor Light from the safety of the deck with the push of a button. This is a fully electric unit with a hidden base wire inside the hardtop, which easily installs to the top's surface. It has the same hole pattern as the GS-950, making upgrades possible, and fits all top thicknesses. The GS-960 lights run on 12 volts and consists of four 3-watt LED Cree chips driven by two Mean Well drivers.

- Ideal for boats 39' in length or shorter
- Certified for USCG-required 3-nm
- Includes tube, light and 6" lead of 20-gauge wire from the base
- Polished stainless-steel housing
- Includes tube, light and 6" lead of 20-gauge wire from the base
- 12-volt DC power supply for light function
- 6-Watt Stern Light and 12-watt Anchor
- Low-draw, 0.6 amps per light
- Low-voltage 12-24VDC
- Features a nylon knob on the stainless steel Type-316L breakaway pin for easy manual operation
- Pairs with 6° Wedge Plate (WP-860-960WHA), sold separately
- Pairs with backing palte (BP-860BXZ), sold separately



### PART NUMBER

### DESCRIPTION

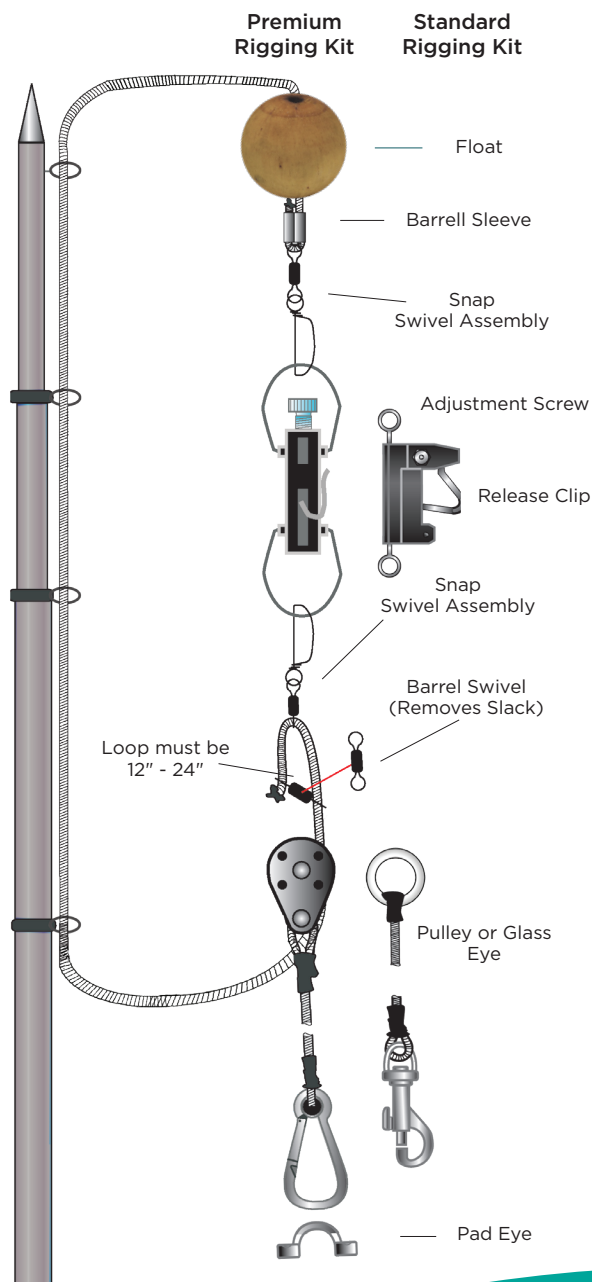
GS-900-1

Grand Slam 900 Masthead Anchor Light

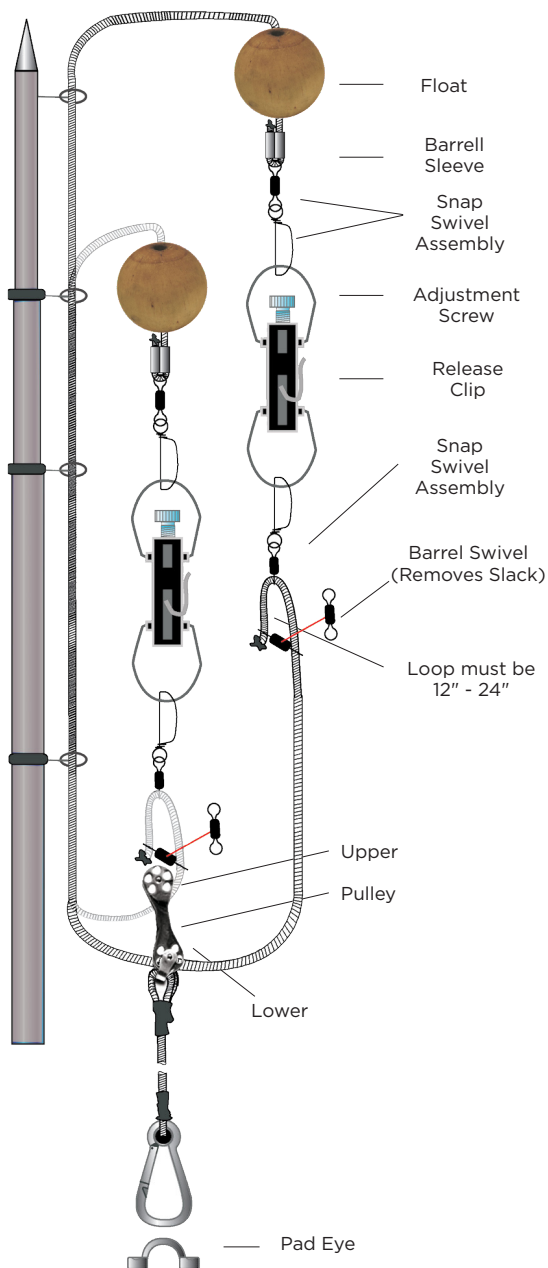
GS-960

Grand Slam 960 Electric Masthead Anchor Light

# RIGGING AN OUTRIGGER - SINGLE



# RIGGING AN OUTRIGGER - DOUBLE



For more information, installation instructions, product videos, application shots and more on our complete line of Sport Fishing and other products, please visit **tacomarine.com**. Buy all these products at your favorite marine retailer and online at **tacomarine.com/buytacodirect**.

Register your new TACO products for warranty at **tacomarine.com/warranty**. For technical support, visit **tacomarine.com/technical-support** and one of our representatives will be happy to assist you.

Like, subscribe and follow us on YouTube, Facebook, Instagram, TikTok and X, where we post regular sport fishing content and engaging how-to videos.

## TACO<sup>®</sup> HOW-TO & SPORT FISHING VIDEOS

Subscribe to our popular YouTube channel at  
**youtube.com/tacomarine**.

We have many how-to videos as well as exciting sports fishing clips and more!

   @tacomarine

 @taco\_marine

#TACOOonboard

# INDEX

A	
Adjustable Center Rigger Rod Holder Mount	15
Aluminum Center Rigger Poles	19
Aluminum Rod Racks	27
Aluminum Tele-Outrigger Poles	19
B	
Bungee Rod Holder	31
C	
Carbon Fiber Internal & Collapsible Poles	16
Carbon Fiber Tele-Outrigger Poles	17
Center Rigger Fixed Mount	15
Clamp-On Rod Holder	29
Come On Board Handles	30
D	
Deluxe Aluminum Tele-Outrigger Poles	18
Deluxe Poly Rod Racks	29
Deluxe Trident Rod Holder Clusters	26
G	
Grand Slam 170 Outrigger Mount	13
Grand Slam 170-2 Center Rigger Mount	14
Grand Slam 280 Outrigger Mount	12
Grand Slam 2801 Outrigger Mount	12
Grand Slam 300 Outrigger Mount	9
Grand Slam 390 Outrigger Mount	10
Grand Slam 400 Outrigger Mount	11
Grand Slam 800 VHF Antenna Mount	33
Grand Slam 860 Electric VHF Antenna Mount	33
Grand Slam 900 Masthead Anchor Light	34
Grand Slam 960 Electric Masthead Anchor Light	34
Grand Slam Backing Plate	21
K	
Kite Fishing Rod Cluster	25
M	
Multi-Purpose Portable Cleat	30



# INDEX

## O

Olympic Rod Holder Cluster	25
Outrigger Base Reducer	21
Outrigger Line Caddy	20
Outrigger Line Tensioner	20

## P

Pre-Drilled T-Top Extrusion Plates	31
------------------------------------	----

## Q

Quick Release Fender Locks	32
----------------------------	----

## R

Reel Hanger	28
Rigging Instructions	35-36
Rigging Kits	22-23
Rigging Components	24
Rod Hangers	28
Rod Holder Liner	25

## S

ShadeFin®	4-5
ShadeFin® Mini	6-8
Striker Base Gunnel Mount	15

## T

Transom Mount Rod Rack	27
------------------------	----

## W

Wedge Plate	21
-------------	----

Our sport fishing products are recognized worldwide for durability and quality, and endorsed by professional anglers who've used their Grand Slams in some of the toughest conditions at sea.



**PATRICK** |

**EMPOWERING  
ENTHUSIASTS**

Explore our complete line of Sport  
Fishing products on our website.

**TACOMARINE.COM**

    @tacomarine  @taco\_marine **#TACOONBOARD**